



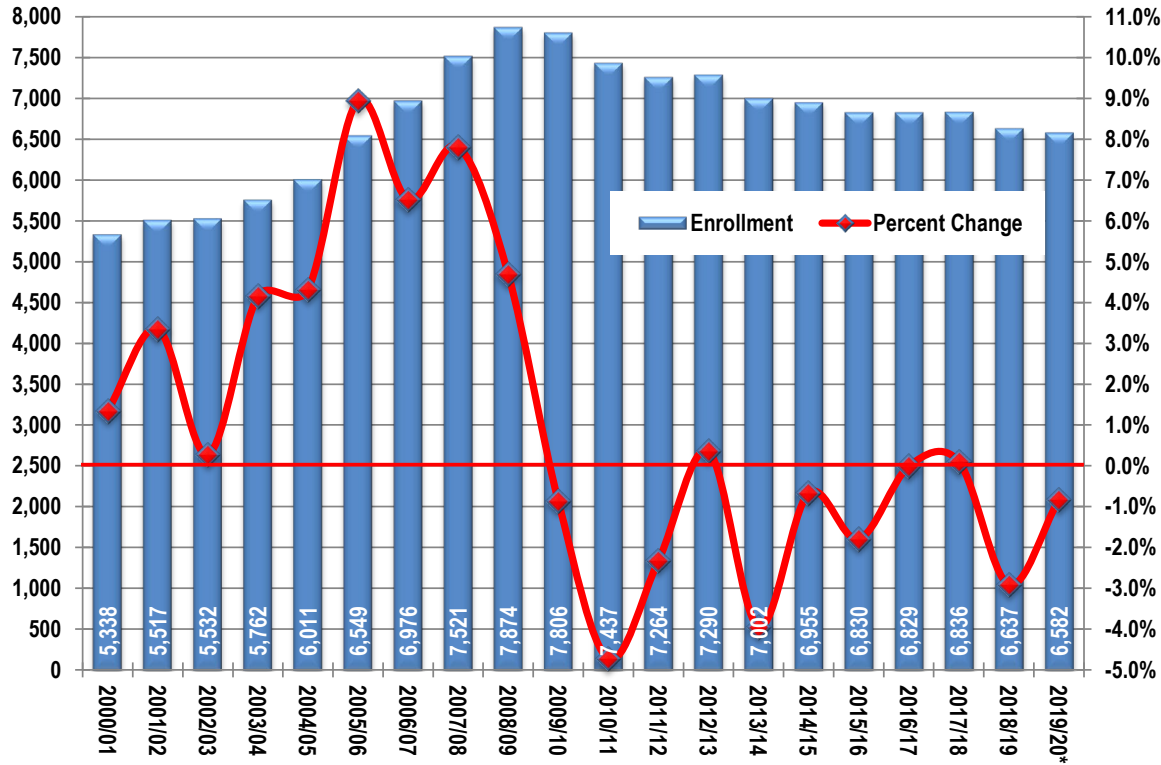
**CASA GRANDE  
ELEMENTARY  
SCHOOL DISTRICT #4**

# **CGESD ENROLLMENT AND SCHOOL BOUNDARY INITIAL DISCUSSION**

WHY do we need to address  
enrollment management and school  
boundaries at CGESD?

# ENROLLMENT DETAILS

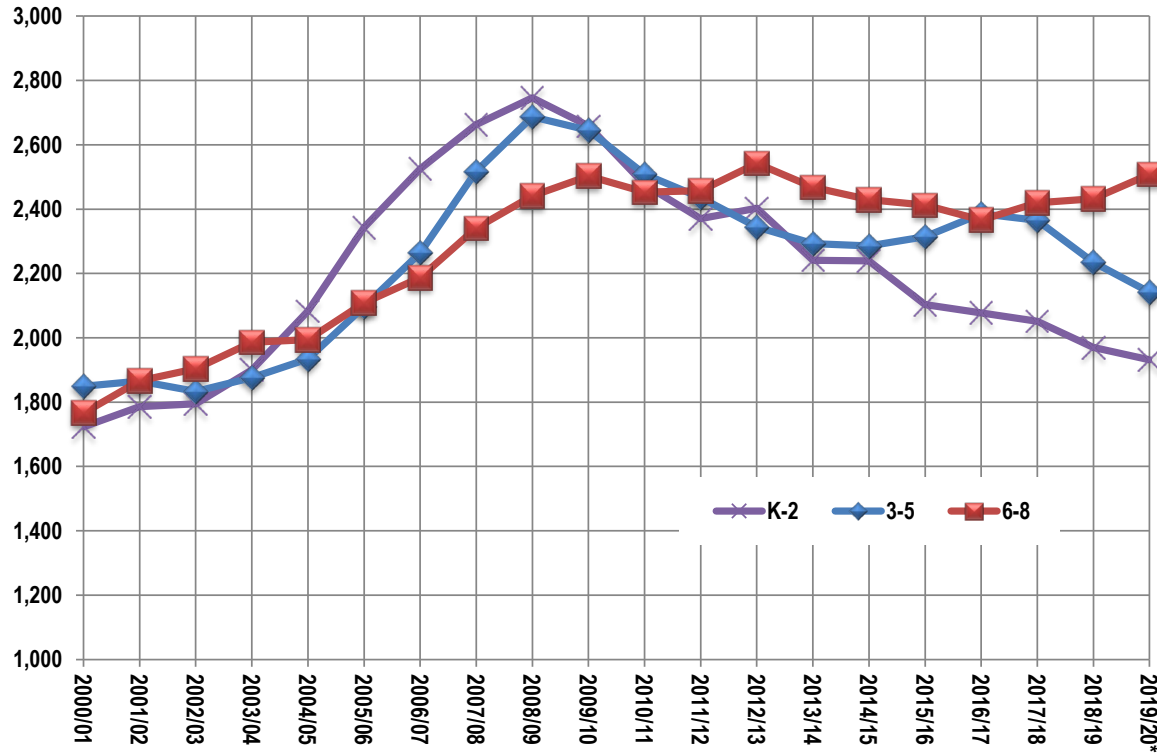
# 40<sup>th</sup> Day Headcount Enrollment



Sources: Arizona Department of Education; Casa Grande Elementary School District.

\* Enrollment as of September 5, 2019.

# 40<sup>th</sup> Day Enrollment Cohorts

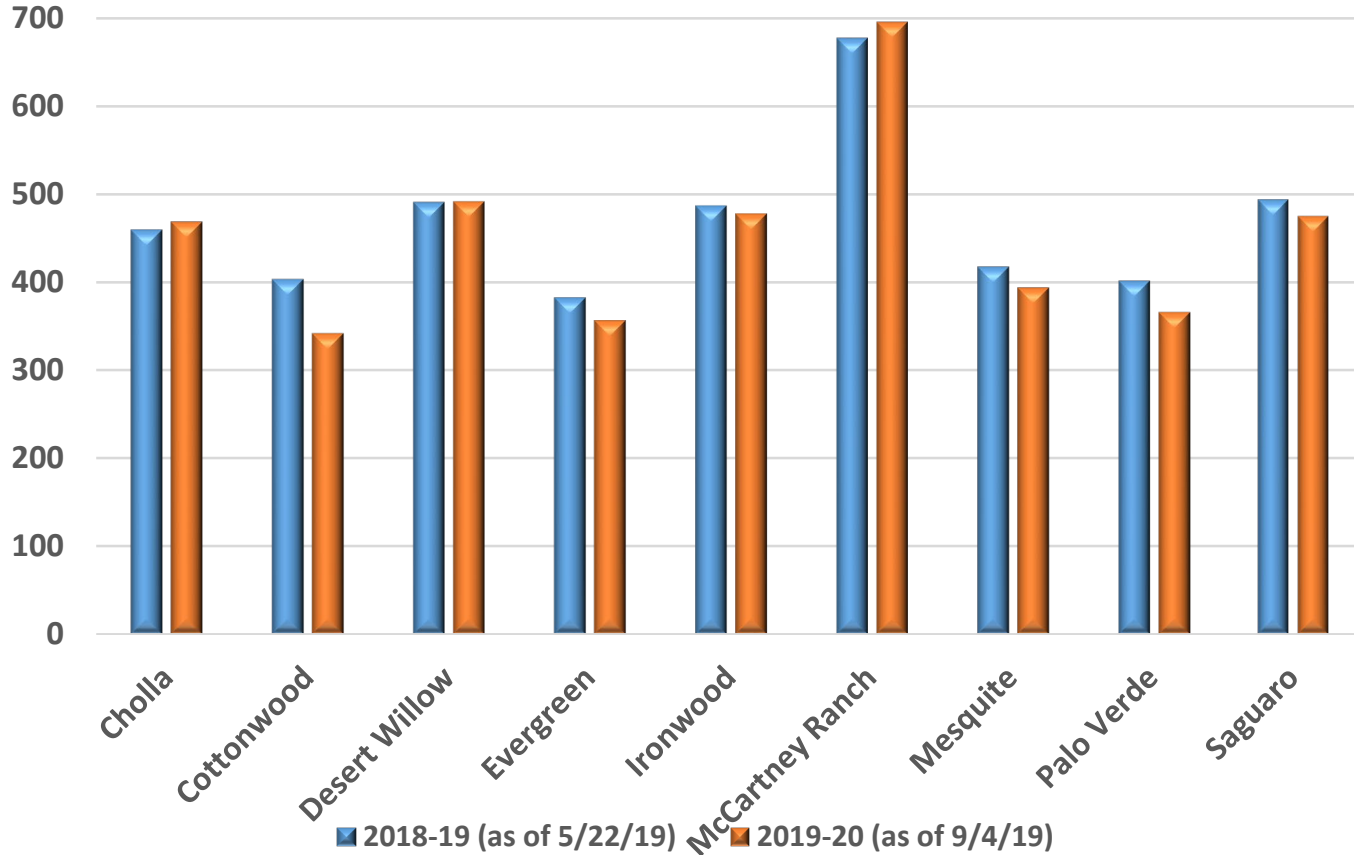


*6-8 enrollment will follow with a decline next year*

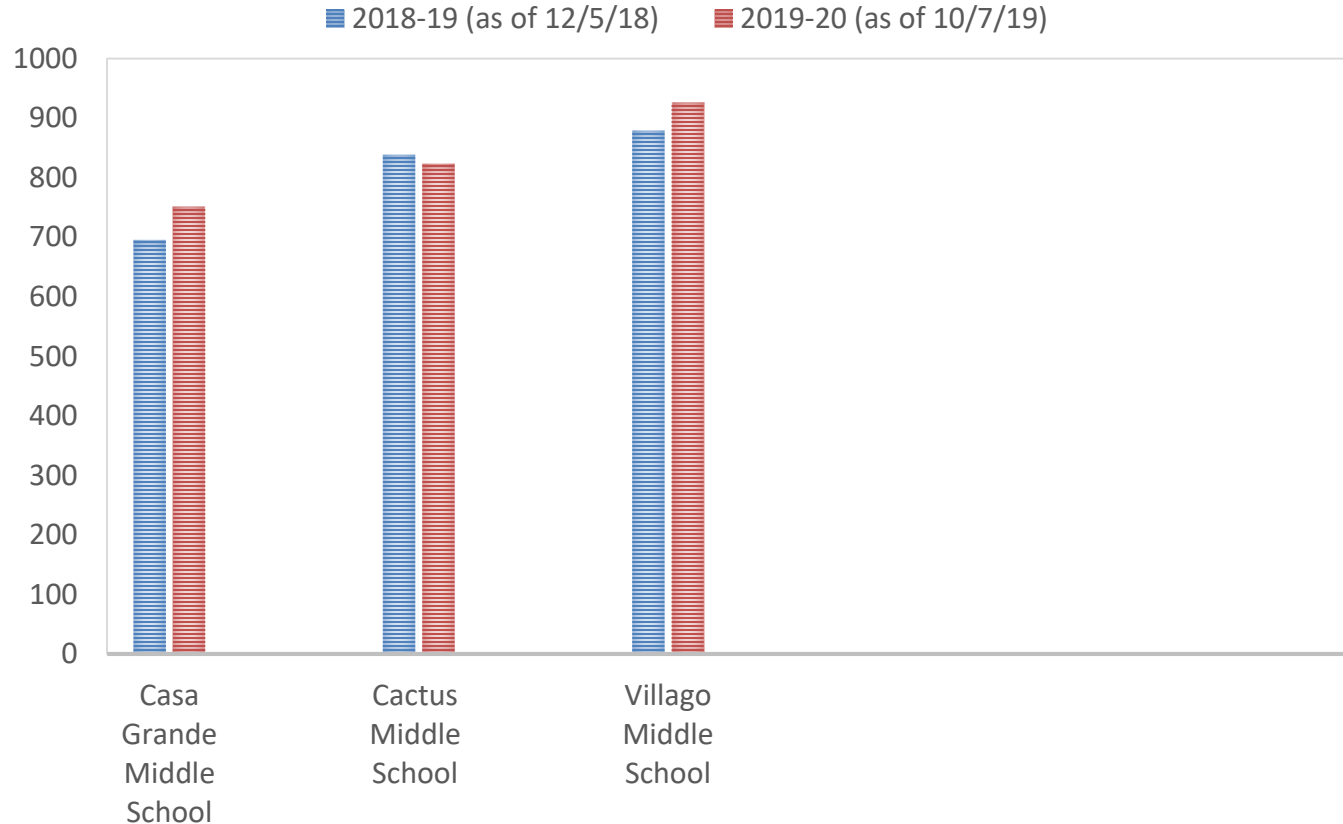
Sources: Arizona Department of Education; Casa Grande Elementary School District.

\* Enrollment as of September 5, 2019

# Elementary Enrollment By School



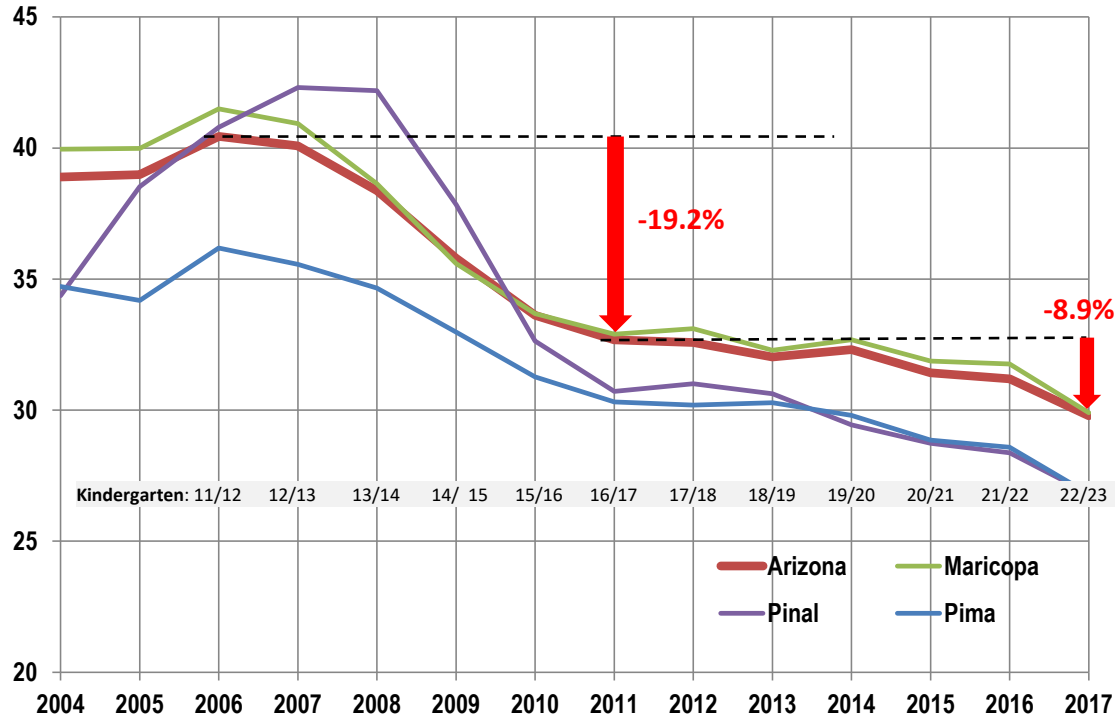
# Middle School Enrollment By School





# Birth Rate Trends

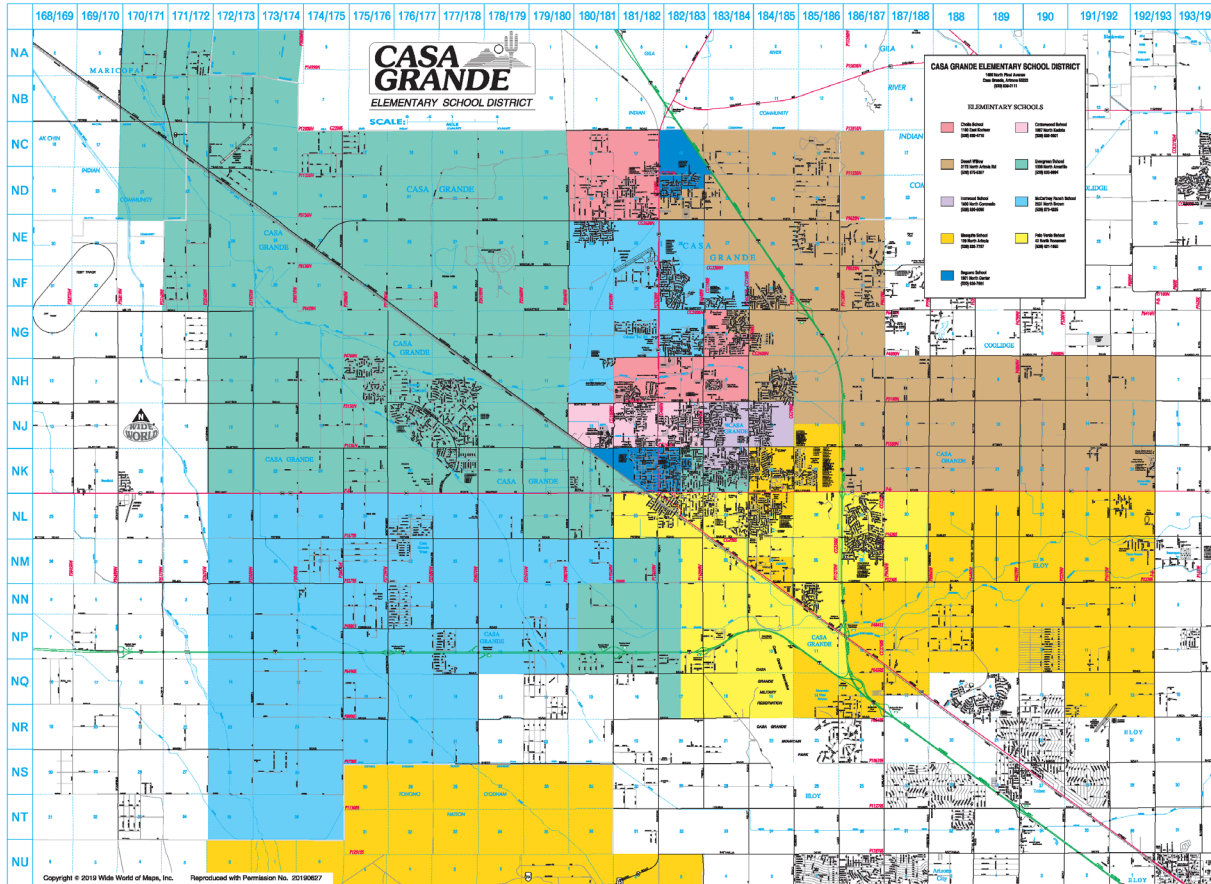
Births per 1,000 people aged 15 to 45



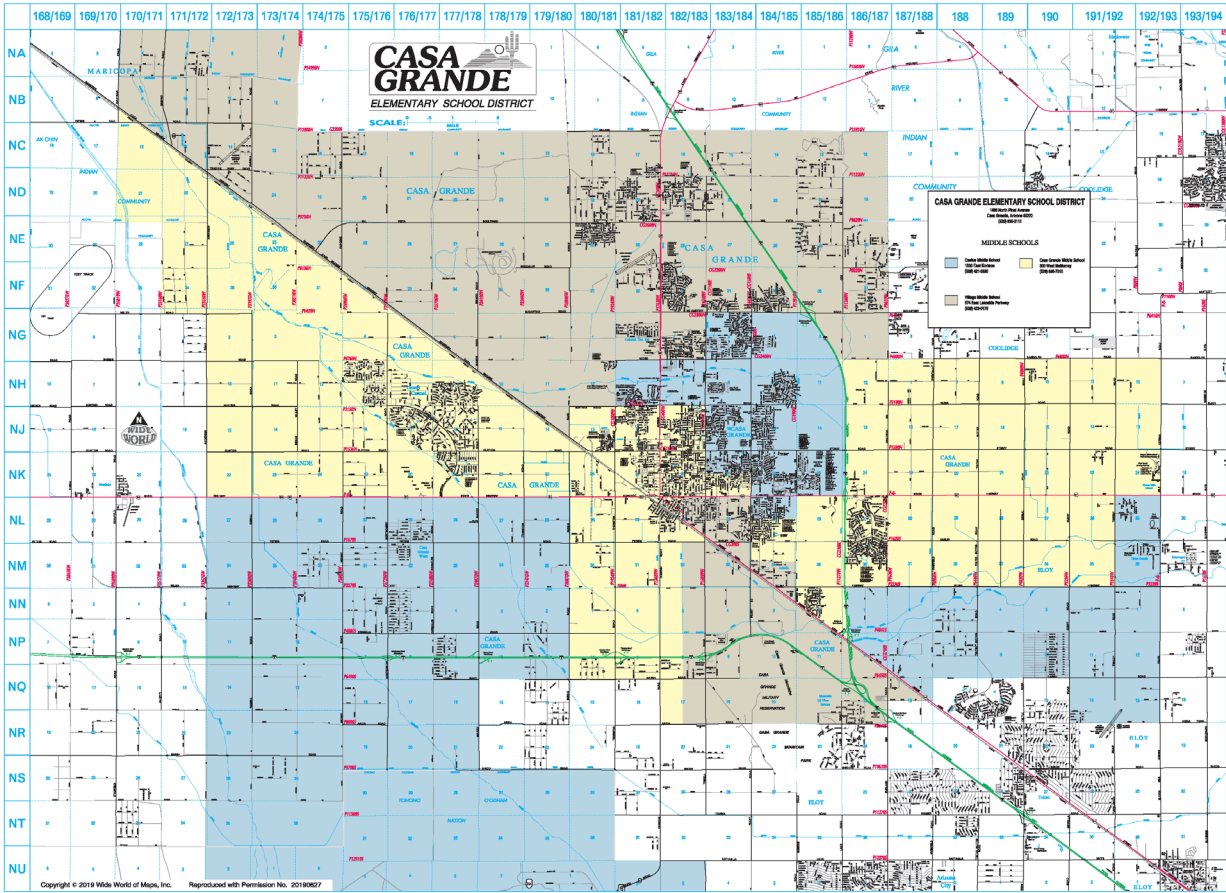
Sources: Arizona Department of Health Services; Applied Economics, 2018.

# BOUNDARY DETAILS

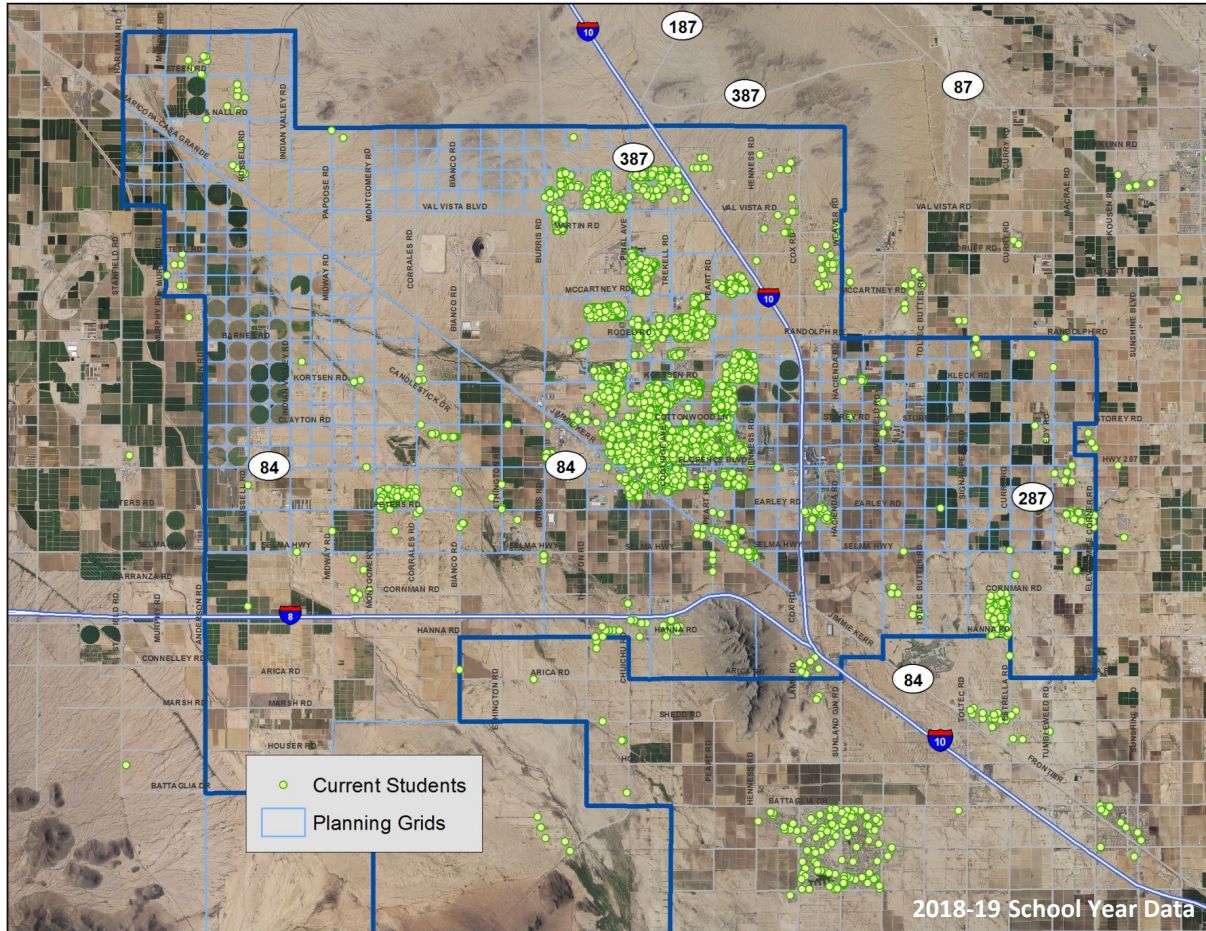
# Current Elementary Attendance Boundaries



# Current Middle School Attendance Boundaries



# Distribution of Students





**Student class sizes are disproportionately smaller than near by schools with current boundaries**

**Early grades with less than 16 students per class is common at some area schools**



**Photos taken at Cottonwood Elementary**

**Inverse situation where student class sizes are disproportionately larger than near by elementary and middle schools**

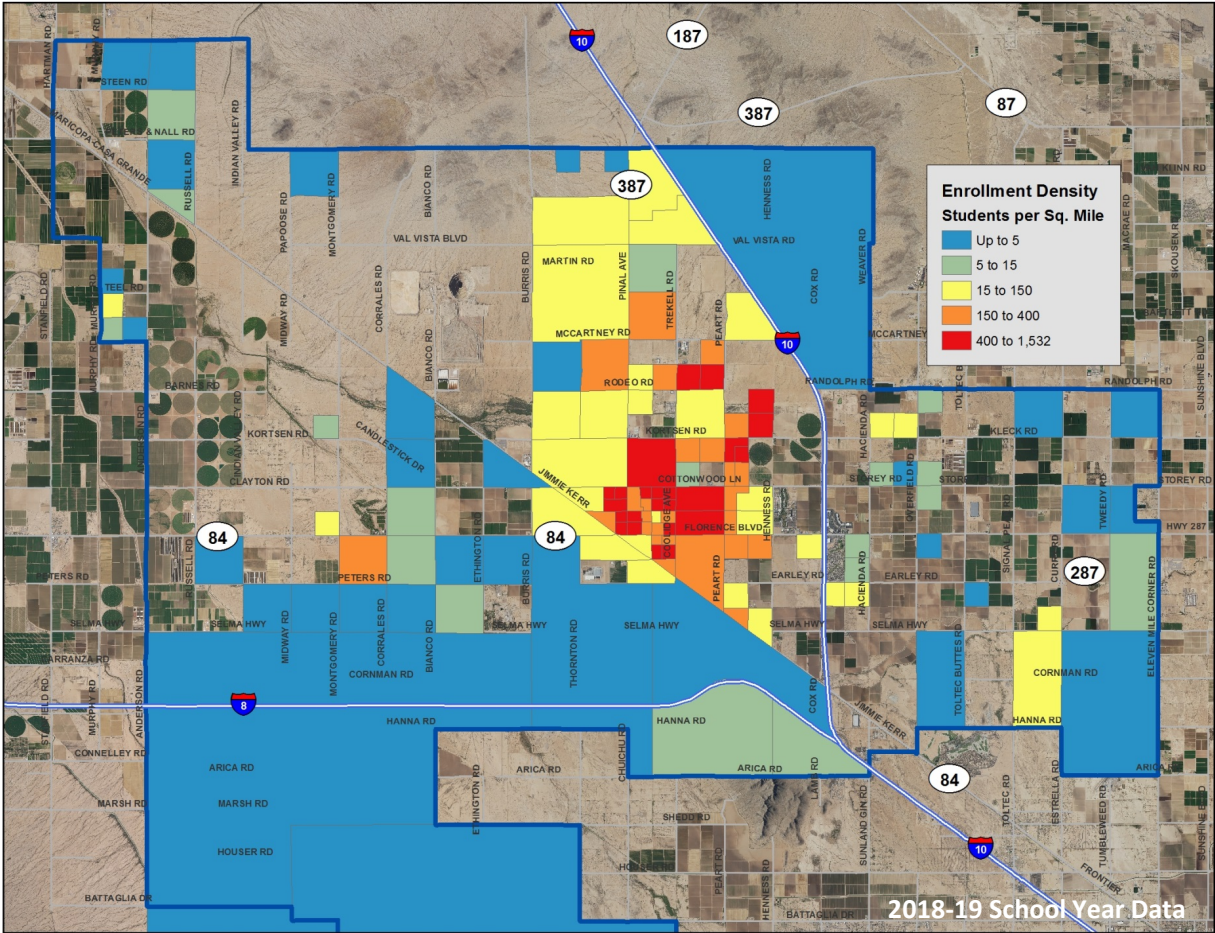


**Middle school classes can be in excess of 35 students given current boundary map**

**Photo taken at Villago Middle School**



# Enrollment Density

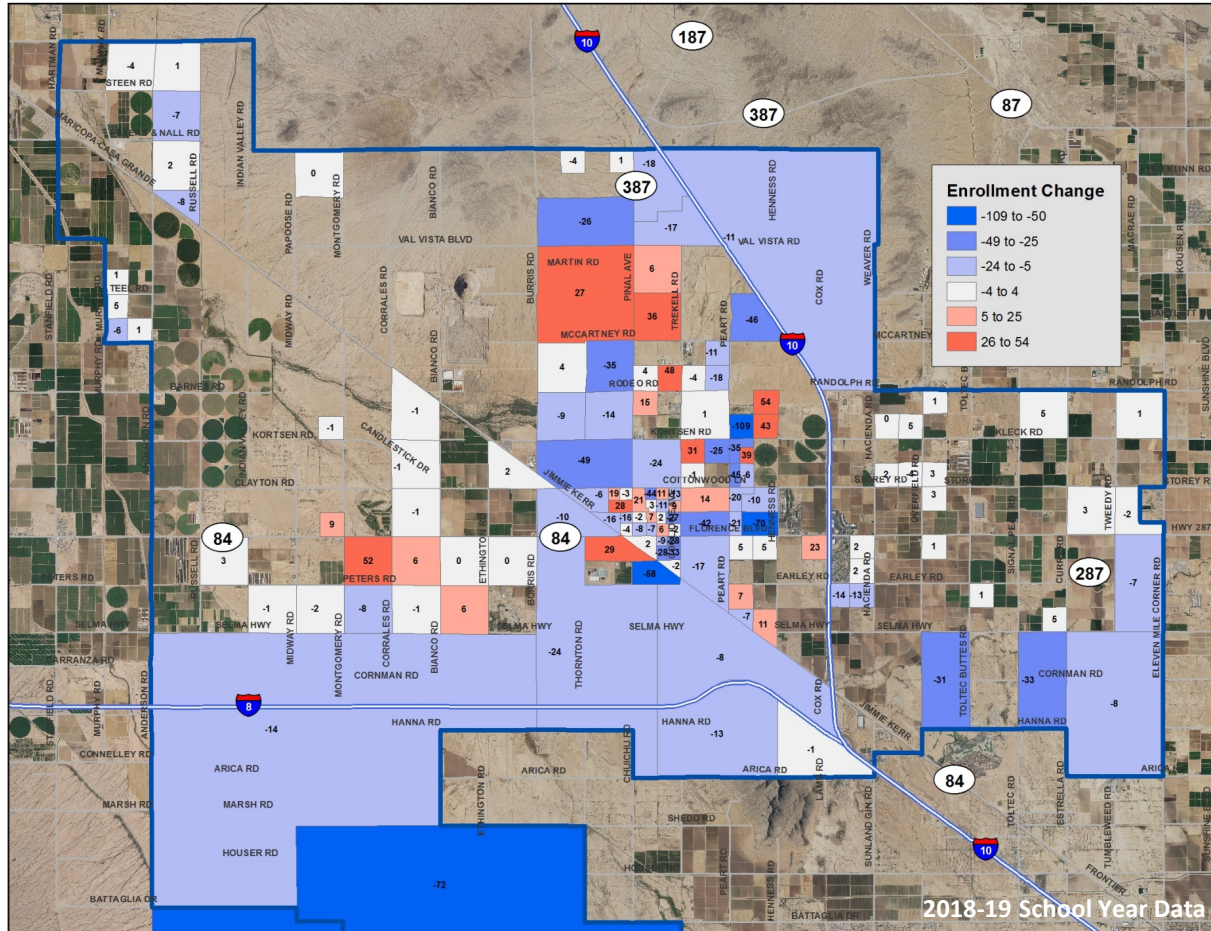




**Enrollment directly impacts school facilities and capacity for lunches, events, and so much more**



# Change in Enrollment - 2011/12 to 2018/19



# Enrollment Management Planning Components

## **Background**

1. Core Principles of Enrollment Planning
2. Research and Data Collection
3. Defining Who We Are and Where We Are Headed

## **Strategies**

4. New School Design/Programming and Student Recruitment
5. Enrollment Stabilization
6. School Attendance Boundaries
7. Telling Our Story: Marketing and Community Engagement

# Enrollment Management Planning Process

## **Create and Sustain Stakeholder Awareness / Engagement**

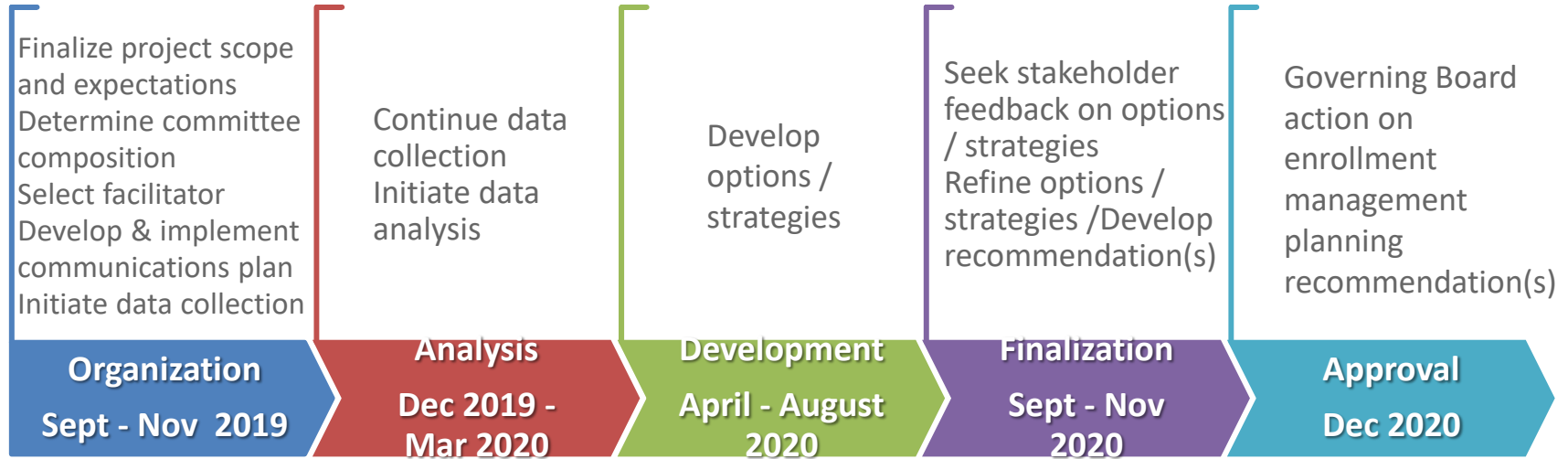
- Sponsor community / school forums
- Develop and implement a stakeholder communication plan

## **Form an Enrollment Management Planning Committee**

- Determine committee membership composition and committee selection process
- Utilize an outside facilitator
- Engage the services of a firm for data analysis and modeling (need for GIS expertise)

# Enrollment Management Planning Timeline

(Preliminary)



*Enrollment management plan recommendations approved by the Governing Board are targeted for implementation beginning with the 2021-2022 school year*

# QUESTIONS AND TABLE DISCUSSION